

Coordonnées

* = Obligatoire

Société

Téléphone

Nom

Fax

Adresse

E-Mail | www.

Projet

Sortie

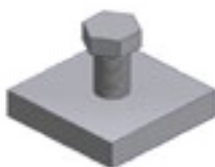
*Crowfoot fermé



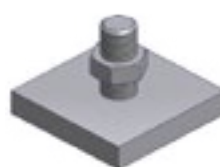
*Crowfoot fermé



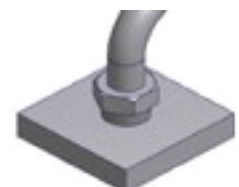
*Crowfoot ouvert



OU



OU



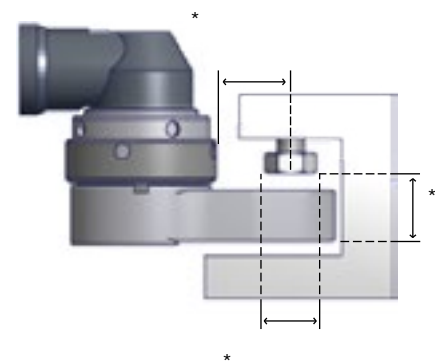
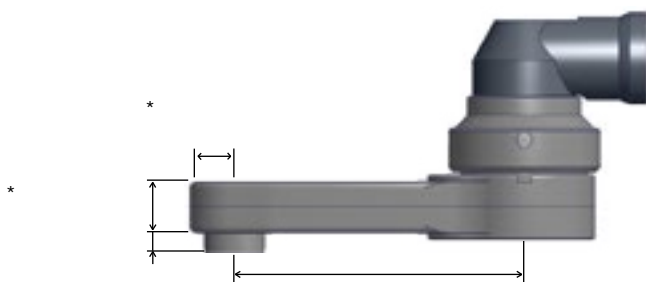
Détails techniques

Merci d'indiquer s'il s'agit des dimensions minimum ou maximum

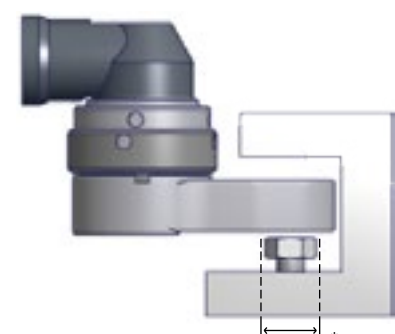
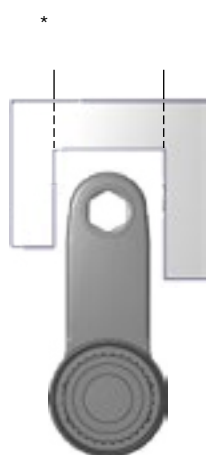
min. max.

Couple

Dimension de la douille
ou embout



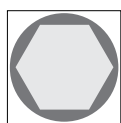
*1)



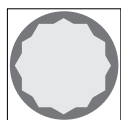
¹⁾Ne s'applique pas au crowfoot fermé

Profil de la douille

Formes spéciales



Hexagonale



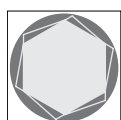
Bi - hexagonale



Bit holder



Surface drive



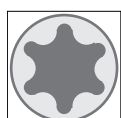
Engagement rapide



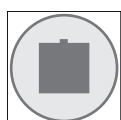
Carré femelle



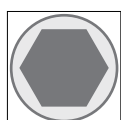
Torx E



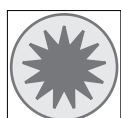
Torx TX



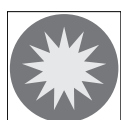
Carré d'entraînement mâle



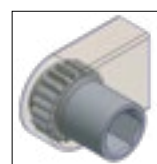
Hexagone mâle



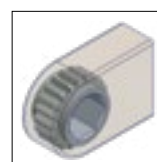
XZN mâle



XZN femelle



Douille déportée



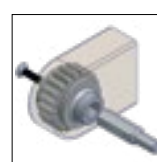
Traversante



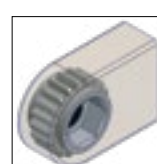
Profondeur hexagone
Diamètre trou central



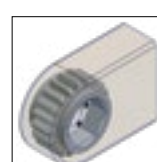
Bit holder standard



Bit holder avec système de
retenue par vis



Aimant fond de douille



Douille aimantée
débouchante



Douille rétractable

***Adaptation**

Renvoi d'angle 90°



Renvoi d'angle 110°



Visseuse droite



Visseuse droite



Visseuse revolver



Sortie visseuse

Référence

Couple maximum

Vitesse maximum

Notes